

Connectivity Options for OEM Sensors

OEM sensors are used to monitor either the laser source or the laser system performances; Laser Point offers many solutions to integrate its laser sensors and to provide fast feedback signals necessary to control the system.

Deliverables comprise several product lines:

- Discs and Sensors exiting with a natural analog output signal
- Sensors with Built-in electronics providing an amplified analog output
- Sensor with RS232 interface
- Sensor with USB interface
- Sensors with a complete readout instrument, including display, PC interface and SW



Sensors can be supplied in various configurations each of which requires a dedicated connection option with the electronics that manages the sensor's signals.

Standard connection options for Laser Point OEM products are :

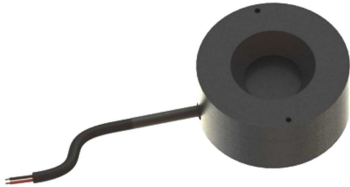
- **IIS (Intelligent Identification System):** it embeds an EEPROM within a DB-15 Connector that stores calibration data, corrections and various information regarding the head .
It is a necessary device when our thermal heads are associated to Laser Point's Rack mount LPM-OEM meter, LPM-CE, PLUS and Pc-Link power and energy readouts.
- **Digital RS232 interface:** allows the measurement of power or single shot energy. For those integrators that require an in house written SW, Laser Point provides a DLL driver and a protocol communication interface .
- **Digital USB interface:** allows the measurement of power or single shot energy. They are delivered with a powerful SW that allows the selection of multiple wavelengths and



to display Statistics, Histograms of measured values, long term measurements; a display with Analog needle for laser tuning is also available.

For those integrators that require an in house written SW, Laser Point provides a DLL driver and a protocol communication interface .

- **Pigtail Wires and Pigtail Cables:** 2 or 4 wires(depending on models) that deliver the natural or amplified signal of sensor discs or heads.



Available on:	Connection Type:	Output Signal :	Add Product Suffix:
<ul style="list-style-type: none"> ▪ SD Series of Sensor Discs 	<ul style="list-style-type: none"> ▪ Wire Pigtail : 2x 100 mm leads 	<ul style="list-style-type: none"> ▪ Natural response 	none
<ul style="list-style-type: none"> ▪ CSA / CSW Series of Thermal OEM Sensors ▪ FIT-H Series of OEM Power Probes 	<ul style="list-style-type: none"> ▪ RS232 interface : termination on RS232 connector; cable with standard length of 1.5m – Max. length to 5m on request. Power input provided via +12 VDC input from external power supply. ▪ USB 2.0 interface : termination on USB connector; cable with standard length of 2.5m – Max. length of 5m on request. USB provides direct connection to PC. Power provided via USB connection. ▪ IIS on DB15 Connector: termination on DB15 connector; cable with standard length of 1.5m – Max. Lengths to 5m on request. ▪ Pigtail Cable: Standard length 1.5m - Max. 5m . 	<ul style="list-style-type: none"> ▪ Digital Signal ▪ Digital Signal ▪ Natural response ▪ Natural response 	<p>-RS</p> <p>-USB</p> <p>On non standard lengths ask for new Part Number</p>
<ul style="list-style-type: none"> ▪ AHA/AHW Series of Thermal OEM Sensors with Built-in Amplifier 	<ul style="list-style-type: none"> ▪ Pigtail Cable: Standard length 1.5 m - Max. 5m 	<ul style="list-style-type: none"> ▪ Amplified and accelerated analog out 	<p>On non standard lengths ask for new Part Number</p>